

Threaded Stud GST 8.8

Group: 1316

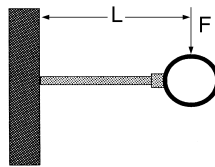
Application

Due to strength class 8.8 the Threaded Studs are suited for applications with bending loads (e.g. risers).

Technical Data

Thread	Permissible load (tension)
M10	24.7 kN

Length [mm]	40	70	100
Permissible bending load	0.75 kN	0.43 kN	0.30 kN



$$\sigma_{zul} \leq 431 \text{ N/mm}^2$$

$$f \leq 3 \text{ mm}$$

Material: Steel, strength class 8.8, galvanised
Surface: yellow passivated

Type	Length [mm]	W [kg]	Quantity [pack]	Part number
M10/40	40	0.02	100	116782
M10/70	70	0.03	100	116783
M10/100	100	0.05	100	116781