

Support Cone SMD 1

Group: 1325

Application

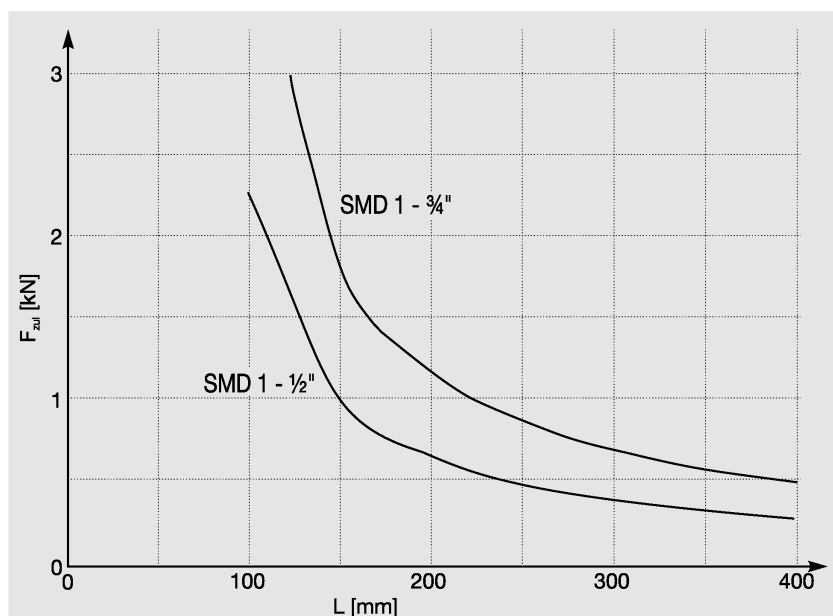
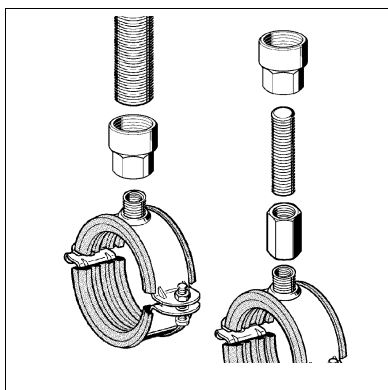
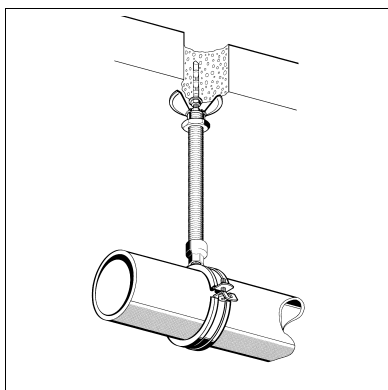
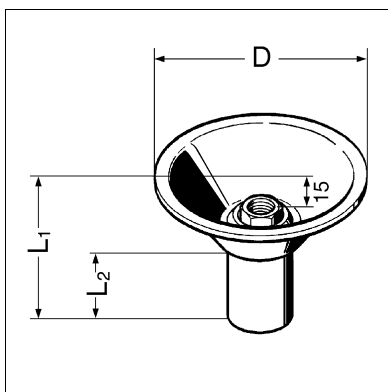
Single-point mounting element for use with an anchor for floor, wall and ceiling mounting in M&E services. With its good overall stability, the Support Cone SMD 1 may also be used as a fixed-point mounting element in certain areas. In that case the permissible values for the lateral forces indicated in the characteristic curve are to be taken into consideration. This also applies to wall mounting situations. When used as fixed-point mounting element the pipe clamp is to be connected directly to the support tube. When used as a normal, rigid mounting element, a grub screw may be used between support tube and pipe clamp for height adjustment.

Technical Data

The mentioned dates respect the permissible bending stress.

$\sigma_{\text{perm}} \leq 160 \text{ N/mm}^2$ and the bending $f_{\text{zul}} \leq 3 \text{ mm}$.

Permissible anchor values may restrict the application.



Material: Steel, electro-galvanised

Type	Connection to system	Connection to building structure	D [mm]	L ₁ [mm]	L ₂ [mm]	W [kg]	Quantity [pack]	Part number
SMD 1-10	M10	M8	92	71	46	0.24	25	112382
SMD 1-12	M12	M8	92	71	46	0.26	25	117513
SMD 1-16	M16	M10	92	65	39	0.25	25	117984
SMD 1- 1/2"	1/2"	M10	92	60	34	0.23	25	118125
SMD 1- 3/4"	3/4"	M12	92	60	36	0.25	25	118134