

Our services – customer-oriented and personal



Planning service

You will receive professional support from our application engineers and technical consultants as early as the planning and tendering phase.

User-friendly software solutions

We provide you with planning tools tailored to your needs, such as our CAD library or our structural analysis programme SiPlan4Customer.

Customised solutions

We always develop the optimal fastening solution for you and your projects, whereby the economic use of our systems is in the foreground. The Sikla product range extends from simple fastening elements to complex system solutions and special products for special applications.

Prefabrication service

Prefabricated assemblies represent an enormous savings potential and are an indispensable part of modern installation. With customised prefabricated small series, you minimise the assembly effort and shorten the construction time on site.

Logistics - Just in time, just in place

Our modern logistics concept guarantees that Sikla products are available for you nationwide within 24 or 48 hours.

Project support

We also support you on site with our know-how and a team of specialists in order to support a smooth and optimal assembly process.



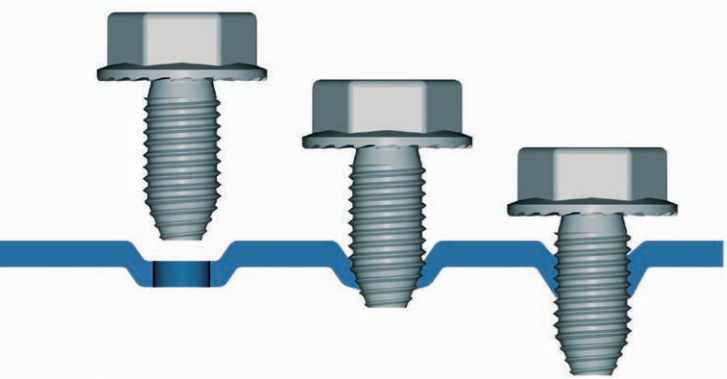
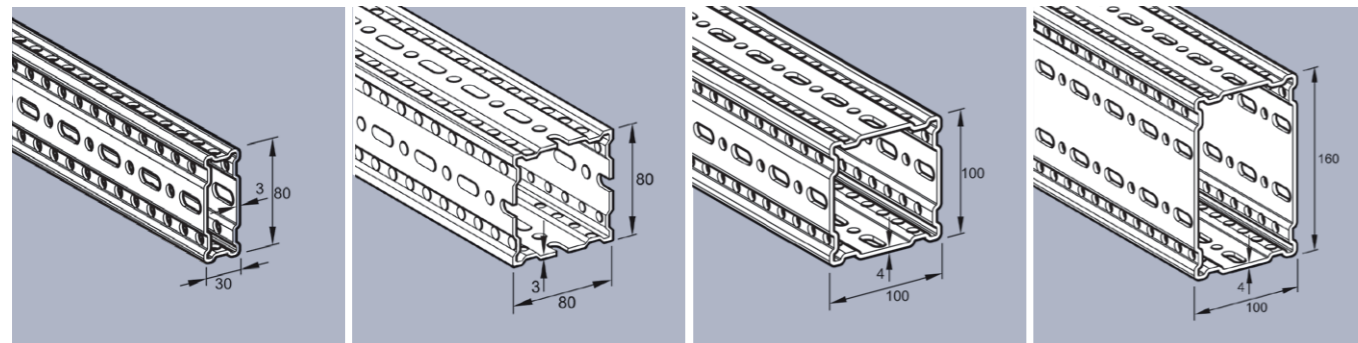
**The mounting system
with unlimited
application versatility**



Sikla GmbH
In der Lache 17
D-78056 VS-Schwenningen
Phone +49 7720 948 0

www.sikla.com

siFramo is a multifunctional mounting system for all load ranges that convinces with unrestricted three-dimensional connection options. The closed siFramo profile is characterised by high torsional rigidity and the adaptation is reliably secured by a stepless form-fit connection. The innovative connection technology reduces the assembly effort and thus saves time and costs.



Efficient assembly with one type of screw for all components

siFramo is assembled using thread-forming screws. Due to the noncutting, precisely fitting work hardening of the nut thread, the screw develops a form fit. The screws in the threads formed in this way can be loosened and reused again. In addition, one type of screw is used for all components and dimensions.

Tested safety

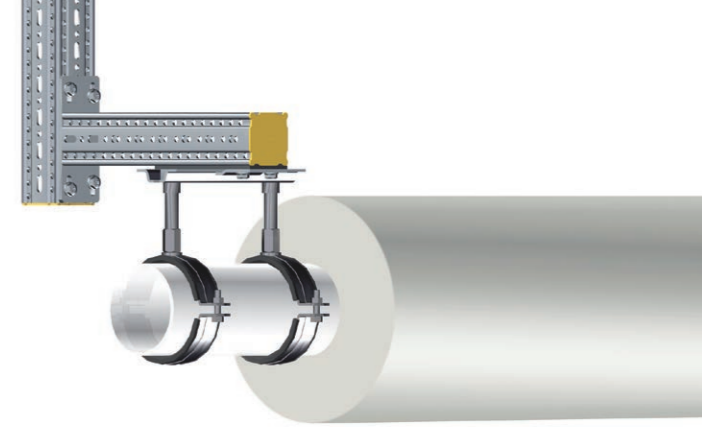
Sikla products are tested in cooperation with independent institutes. The requirements for the products are ensured by external and internal quality controls. Sikla is certified according to ISO 9001.

The siFramo and Simotec support systems are approved by certification according to EN 1090 up to EXC2 and are used on a par with conventional steel construction. You benefit from a reassuring level of safety, which is guaranteed by tested corrosion resistance, statically calculated constructions according to EC 3 as well as the Sikla warranty.



Twist resistance

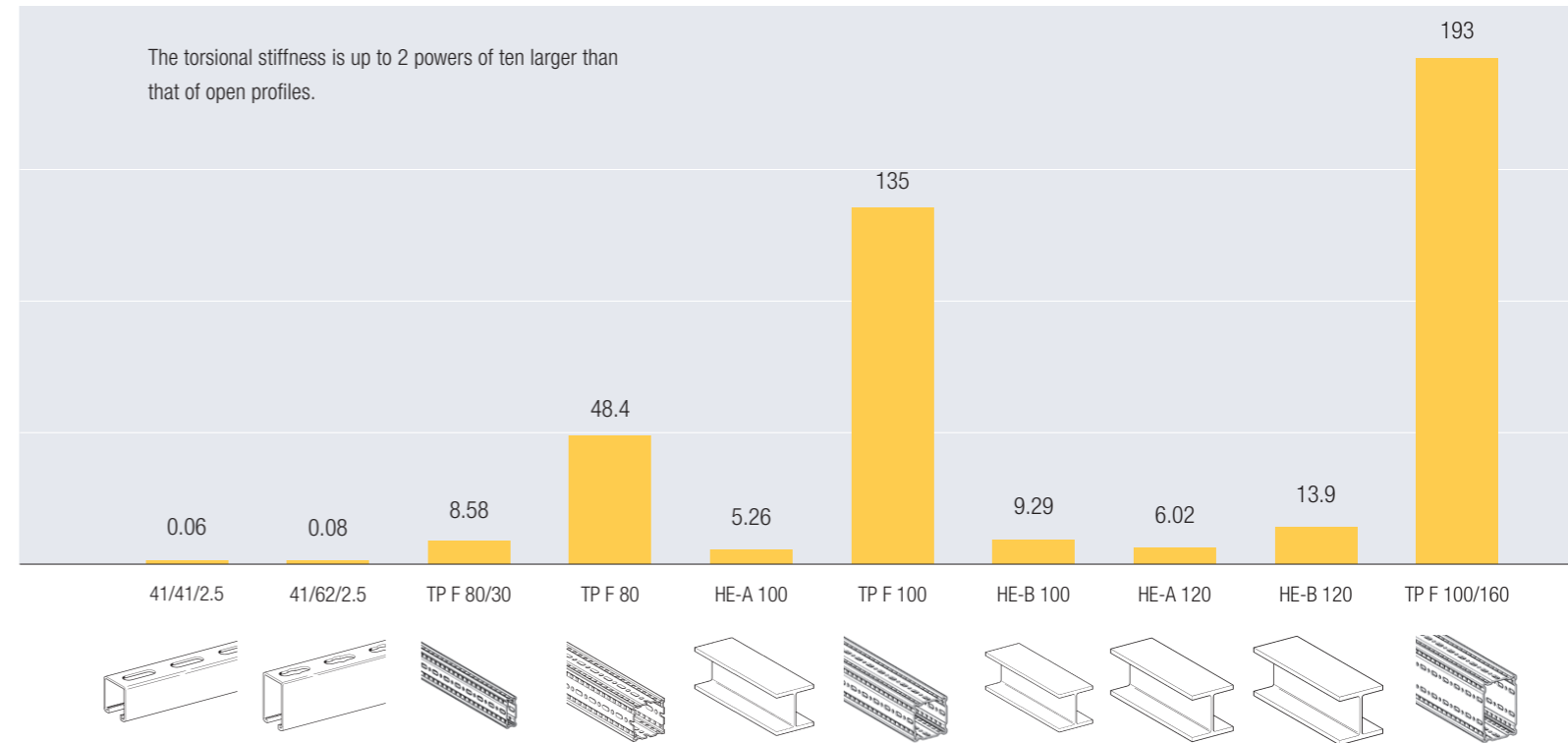
Hot pipes generate frictional forces in the axial direction of the pipe, which must be absorbed by the substructure.



The closed hollow profile TP F is ideal for compression and torsion loads as well as for multi-axial bending.

Torsional stiffness

Comparison at torsional moment of inertia I_z (cm⁴)

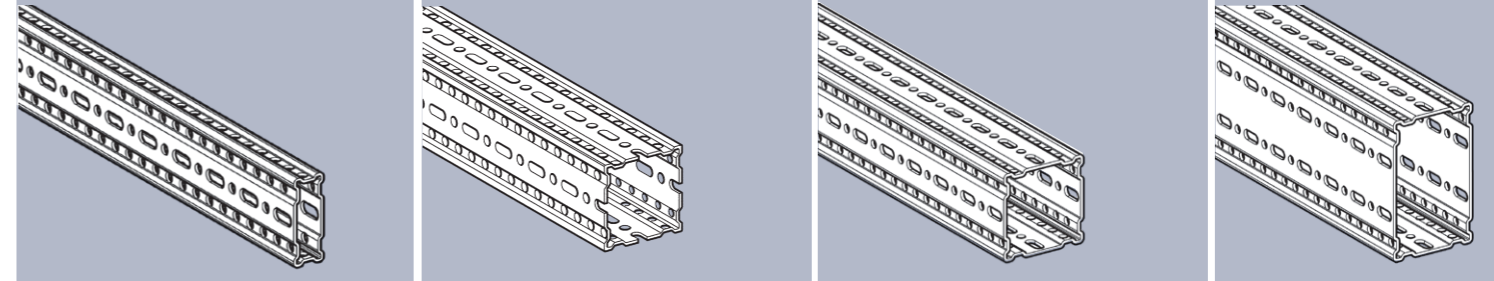


Sikla HCP - for the highest requirements

All siFramo products are supplied in the highquality Sikla HCP coating as standard. For additional corrosion protection requirements, Sikla has also developed an individual multiple coating for the siFramo support system and has obtained proof of compliance with the corrosivity category C5-I „Long“ for this version.



All common fastening situations can be realised with just a few system components:

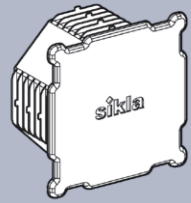


Beam Section TP F 80/30

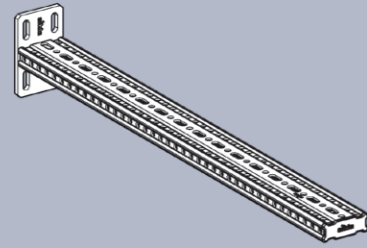
Beam Section TP F 80

Beam Section TP F 100

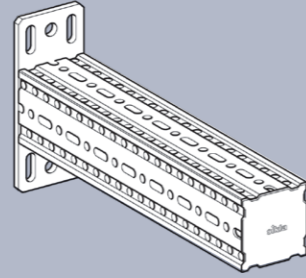
Beam Section TP F 100/160



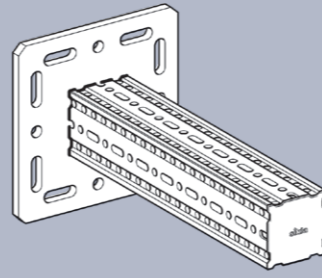
End Cap ADK F 80
End Cap ADK F 100



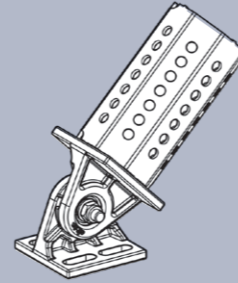
Cantilever bracket AK F 80/30
Cantilever bracket AK F 80/30



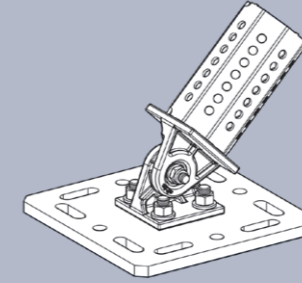
Cantilever Bracket AK F 80
Cantilever Bracket AK F 100



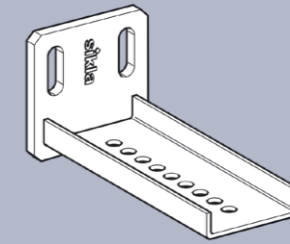
Beam Bracket TKO F 80
Beam Bracket TKO F 100
Beam Bracket TKO F 100/160



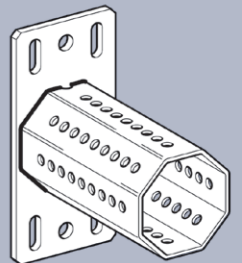
Pivot Joint GE F 80
Pivot Joint GE F 100
Pivot Joint GE F 100/160



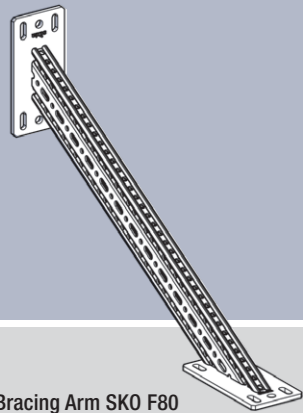
Pivot Joint GE F - ST F 80
Pivot Joint GE F - ST F 100



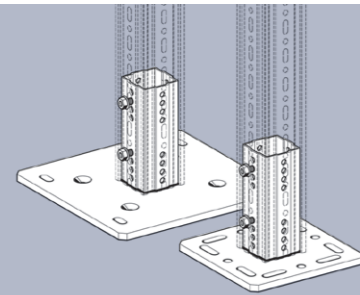
End Support STA F 80/30
End Support STA F 80/30 E
End Support STA F 80/30-Q



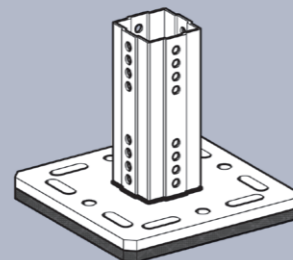
End Support STA F 80
End Support STA F 100
End Support STA F 100-100/160



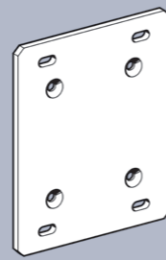
Bracing Arm SKO F80
Bracing Arm SKO F100



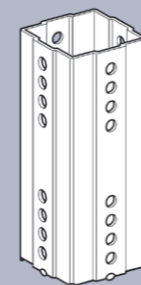
End Support WBD F 80
End Support WBD F100
End Support WBD F 100/160



Insulated Foot Plate SHB F 80



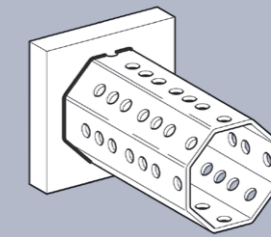
Joining Plate AP



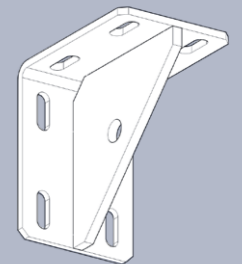
Welding Adapter ASA F 80 GPL Square
Welding Adapter ASA F 100 GPL Square



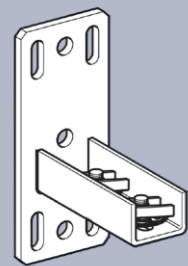
Welding Adapter ASA F 100 Square



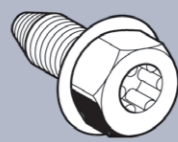
Welding Adapter ASA F 80 GPL Octagon
Welding Adapter ASA F 100 GPL Octagon



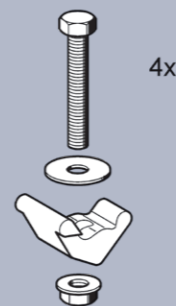
Corner Bracket WD F 80
Corner Bracket WD F 100



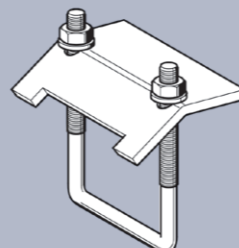
Channel Adapter SA F 80
Channel Adapter SA F 100



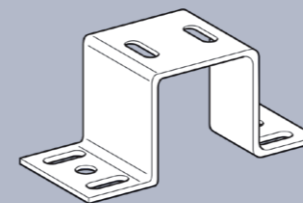
Self Forming Screw FLS F



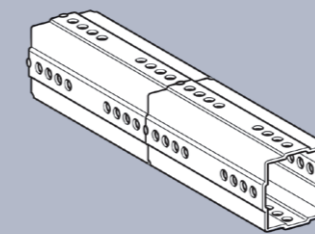
Assembly Set PS



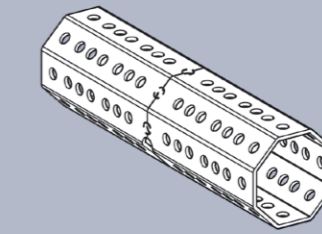
U-Holder SB F 80
U-Holder SB F 100



Beam Section Holder TPH F 80
Beam Section Holder TPH F 100



Square Coupling PK F 80 HCP
Square Coupling PK F 100 4kt HCP



Octagonal Coupling PK F 80 HCP
Octagonal Coupling PK F 100 8kt HCP

You can find the siFramo product range in our e-catalogue at www.sikla.com



 **siFramo** – One system, many advantages

possible applications

- ◆ Multifunctional and self-explanatory mounting system
- ◆ Tested safety
- ◆ Stepless connection
- ◆ Screwing through thread forming technology
- ◆ Quick and easy planning of Standard brackets thanks to „Installation guidelines”
- ◆ Design changes can be adapted immediately and without loss of time on the construction site
- ◆ Minimum weight - maximum handling - maximum load capacity
- ◆ Maximum typing - minimum assembly effort
- ◆ Compatible with any building structure - easy adaptation on site
- ◆ No welding - no interfering edges - no production downtime
- ◆ Reusable after disassembly All components have the high-quality HCP coating
- ◆ Compatible with all Sikla mounting systems

